



LatrobeCity
a new energy



TOURISM INFORMATION



TABLE OF CONTENTS

LATROBE CITY	3
LATROBE CITY TOURISM	4 - 5
Top things to see and do in Latrobe City	4
Day trips from latrobe City	5
What to see and do in Latrobe City.....	6 - 12
ACCOMMODATION IN LATROBE CITY	13 - 16
Accommodation in Latrobe City	13
Maximum accommodation capacity in Latrobe City.....	14 - 16
DINING OUT	17 - 29
CONTACT DETAILS	30

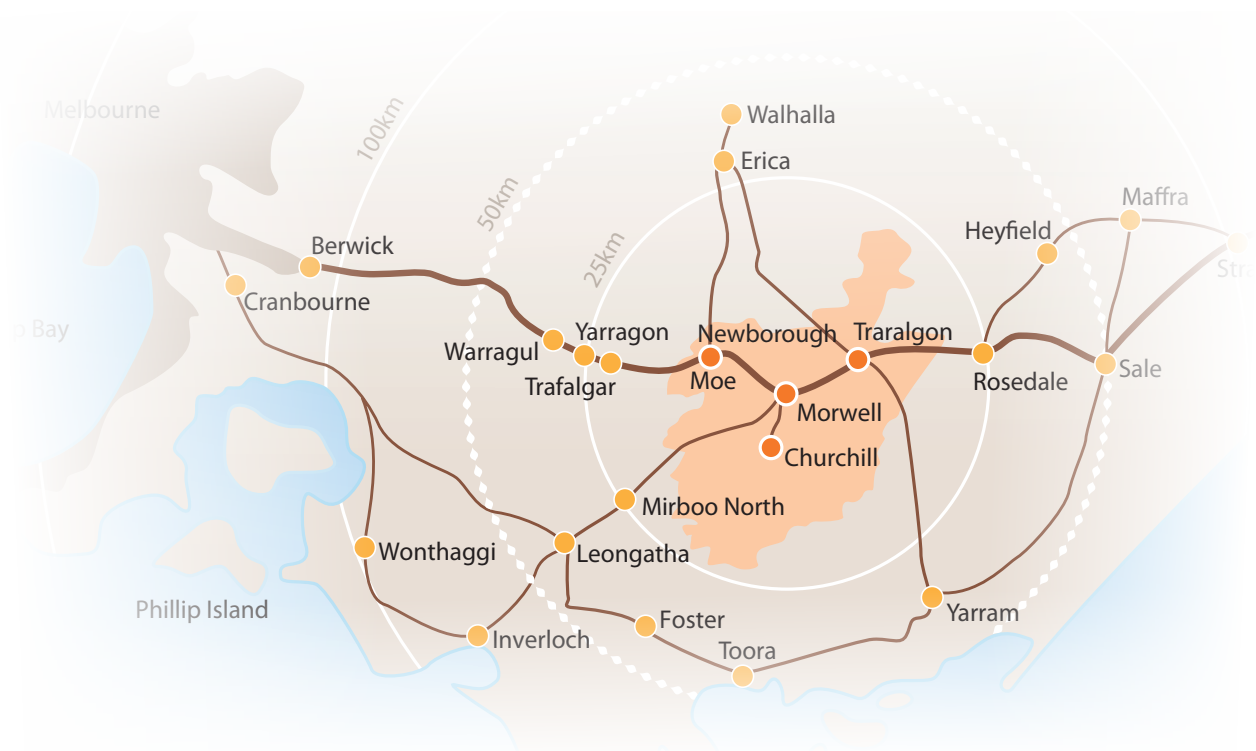


LATROBE CITY

Latrobe City is a vibrant regional City with a population of over 75,000 people. It is recognised as one of the four major Victorian regional cities and one of the fastest growing non-metropolitan centres in Australia. The City is made up of four major urban centres: Churchill, Moe/Newborough, Morwell and Traralgon, with seven smaller townships of Boolarra, Glengarry, Toongabbie, Tyers, Traralgon South, Yallourn North, and Yinnar.

Only 90 minutes away from Melbourne, Latrobe City boasts an abundance of recreational and cultural facilities including the Traralgon Tennis Complex, Latrobe City Sports and Entertainment Stadium, Latrobe Regional Gallery and Latrobe Performing Arts Centre with the added benefit of being nestled amongst some of the best tourist attractions in the state, such as the Morwell National Park, Walhalla, Hazelwood Pondage, Lake Narracan, Victory Park and Tarra Bulga National Park.

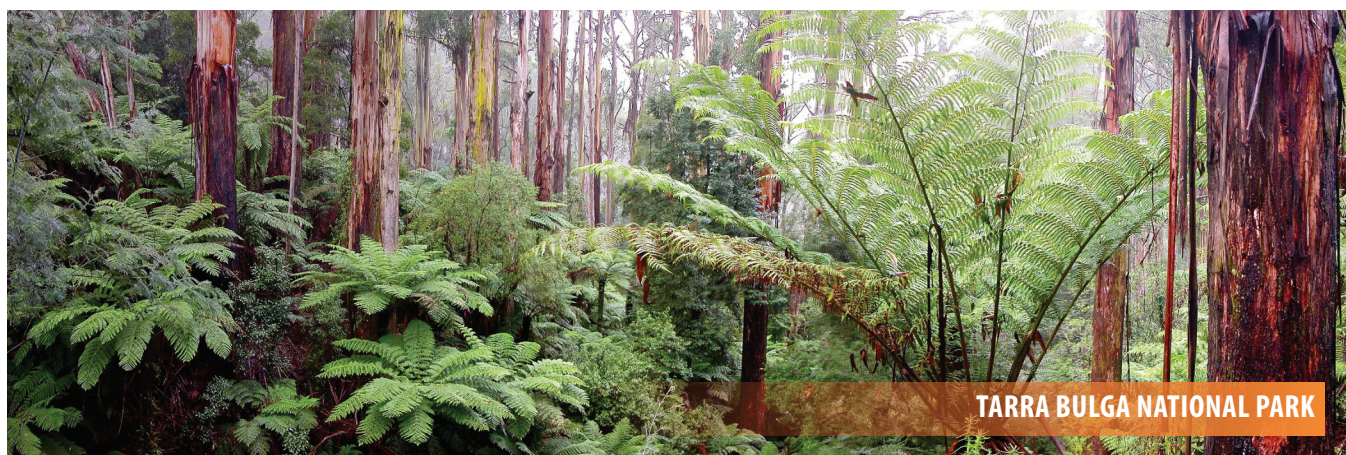
The beautiful and highly productive Latrobe Valley is located at the gateway to Gippsland in the South East corner of the state of Victoria. Latrobe City is diverse, substantial and really is a new energy in regional Australia.



LATROBE CITY TOURISM

Top things to see and do in Latrobe City

1. Take in a show at the **Latrobe Performing Arts Centre**
2. View the spectacular colour displays at the internationally recognised **Morwell Centenary Rose Garden**
3. Take in the spectacular sight of the majestic **Loy Yang Power and Open Cut Mine**
4. **Lake Narracan** is perfect for water skiing, boating and jet skiing
5. Admire the native orchids as you stroll through the **Morwell National Park** or stop for a picnic
6. Take to the skies at **Latrobe Regional Airport** with Scenic flights
7. **Hazelwood Pondage** is ideal for all water activities with warm water all year round
8. Be inspired at the **Latrobe Regional Gallery**, Eastern Victoria's premiere Art Gallery
9. **With a wide range of Golf courses**, play one course in the morning... and another in the afternoon
10. Discover the fascinating displays and memorabilia at the **Old Brown Coal Mine Museum**
11. Step back in time at **Old Gipps town**, discover Gippsland's heritage past
12. Walk amongst the lush tree fern gullies at **Tarra Bulga National Park**
13. Soar with the birds on a scenic flight over the valley at the **Latrobe Regional Airport**
14. Swim the warm waters of **Hazelwood Pondage** all year round
15. Soak up on quality wines at the award winning **Narkoojee Winery**



TARRA BULGA NATIONAL PARK

LATROBE CITY TOURISM

Day trips from Latrobe City

- Explore the historic township of Walhalla by riding on the Goldfields Railway and exploring the long tunnel extended gold mine
- Walk among the tree fern glades or across the suspension bridge at Tarra Bulga National Park
- Discover fresh local produce in the Gippsland Gourmet Country region
- Walk the golden sands of the 90 Mile Beach
- Build a snowman or try tobogganing at Mt Baw Baw
- Tour along Route 94 - The Strzelecki Trail. This scenic drive travels through Latrobe Valley into the Strzelecki Ranges, through villages, past manicured farmland to magnificent forests



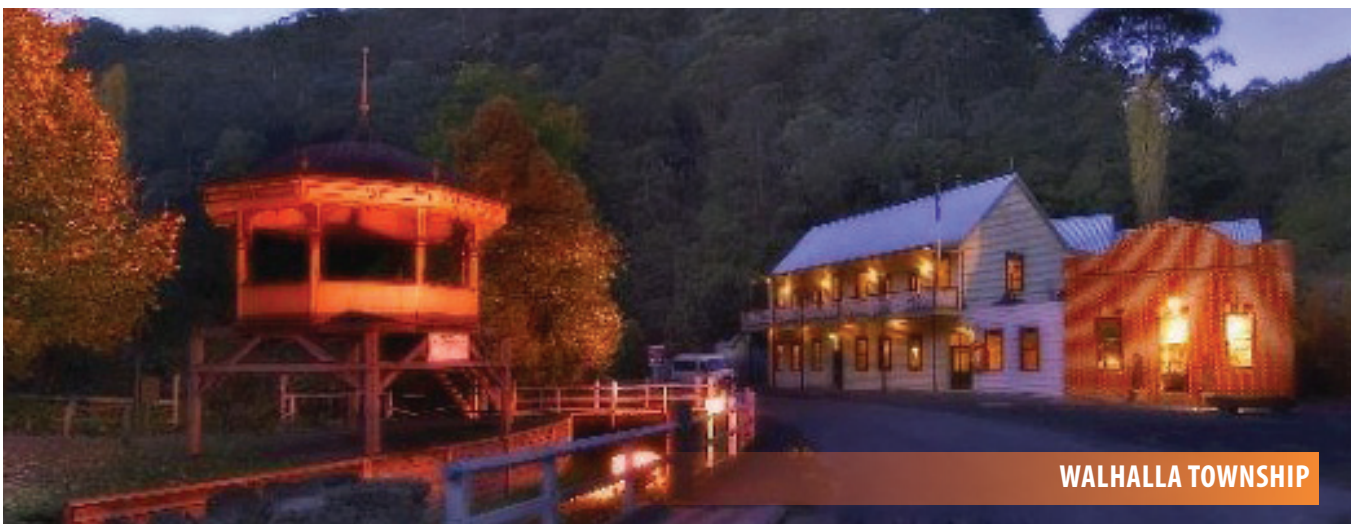
LAKE NARRACAN



EDWARD HUNTER RESERVE



LATROBE REGIONAL GALLERY



WALHALLA TOWNSHIP

LATROBE CITY TOURISM

VISITOR INFORMATION

Latrobe Visitor Information Centre

Located in the 'Old Church', Southside Central, Princes Highway, Traralgon.

Ph: 1800 621 409 Email: visitorcentre@latrobe.vic.gov.au Website: www.visitlatrobe.com

Open 7 days a week from 9.00 am to 5.00 pm. The staff and volunteers in the centre will provide you with information on the regions attractions and answer any general enquiries you may have. Free wifi, charge bar and bike rack.

PARKS, RESERVES AND WALKING TRACKS

Newman Park

Peterkin Street, Traralgon

Within walking distance of the Latrobe Visitor Information Centre, Newman Park appeals to all ages. There is an all abilities playground including slides, swings, sandpits and much more. Electric BBQ's, park benches, toilets and ample parking.

Victory Park

Princes Highway, Traralgon (opposite McDonald's)

Enjoy a walk along the Traralgon Creek and admire the marble sculptures by world renowned Clive Murray- White, "Lars Competalis" sculpture. Have lunch in the band rotunda, admire the trees and the lovely gardens. Home to the Azarole Hawthorn Tree, the only known example of the species in Victoria. Just a short walk over the foot bridge leads you into Newman Park.

Bert Thompson Reserve

Access and parking available via Wright Street, Traralgon

Shady grassed areas surrounding 2 free BBQ's with water tap, 4 picnic tables, a shaded hut, small rose garden and toilets. A short walk to Victory Park.

Traralgon Railway Reservoir Conservation Reserve

Hickox Street, Traralgon

Home to 29.5 ha of varied bush and grassland including a lake, information boards and bench seats, native plants and bird life as well as a gravel/boardwalk circuit. Perfect for a stroll on a sunny afternoon. Please note there are no toilet facilities and wheelchair access is limited.

Ronald Reserve

Vary Street, Morwell

Tennis court and cycling track.

Crinigan Road Bushland Reserve

Access via Maryvale Road, Crinigan Road and Fairway Drive, Morwell.

A significant and rare example of the local natural vegetation. The plant list contains some 150 species from the open forest of Narrow-leaf Peppermint and Manna Gum, through a relatively dense understorey to ferns and a diversity of orchids. Walking tracks radiate from the carpark at the northeast corner.

Morwell Town Common Community Playground

Elgin Street, Morwell

Built in early 1998 by the local community, this adventure playground resembles a castle. The playground is a maze of obstacle courses and balance apparatus. Swings, monkey bars, slides, sandpit and a swinging bridge complete the complex. Facilities include a BBQ area with park benches which make it the perfect family outing. Public Toilets.

LATROBE CITY TOURISM

PARKS, RESERVES AND WALKING TRACKS CONTINUED

Edward Hunter Bush Reserve

Coalville Road, Moe

A 57ha reserve within the township of Moe. Features include rich native forest, ferns, native orchids and lake. Good walking tracks and board walks throughout the Reserve. Wheelchair access to the lake area.

Apex Park

Waterloo Road, Moe (adjacent to racecourse)

Adventure playground consisting of slides and swings. Electric BBQ facilities and toilets. A grass area provides youngsters room to run and set up ball games.

Botanic Gardens

Narracan Drive, Moe

Exotic and native trees, BBQ and picnic facilities, toilets and walking paths to explore the area and access the Moe-Yallourn Rail Trail.

Lake Narracan

Sullivans Track, Newborough

With a surface area spanning nearly 300ha, Lake Narracan is popular for sailing, jet skiing, water skiing, power boating and sail boarding. The lake also attracts some 90 species of birds including the Yellow-tufted Honeyeater. With jetty and boardwalk, it is an ideal setting for picnics.

Gippsland Plains Rail Trail

Traralgon to Stratford

The Gippsland Plains Rail Trail extends 63km from Traralgon to Stratford in Central Gippsland, Victoria. The trail passes through high quality dairy country, and offers panoramic views of the Great Dividing Range to the north, and sweeping 3600 views across the Great Gippsland Plains.

RECREATION, SPORTS & LEISURE

Latrobe Regional Airport

Airfield Road, Traralgon, Ph: 5174 4702 for bookings or enquiries

Open 7 days a week. Take to the skies and see Latrobe Valley and Gippsland in a new light! Choose from a short joy flight, valley circuit, night flights or an area flight of the Ninety Mile Beach, Snowfields, Wilson's Prom, Gippsland Lakes, Wild Coast, City & Bay or Oil Rigs.

Traralgon Golf Club

Princes Highway, Traralgon. Ph: 5174 1709

Offering players and visitors one of the finest venues in Victoria. A superb 18 hole course with grass greens, fully watered fairways and not too many bunkers. This Par 72, ACR 70, 5,897 metre course has hosted many professional tournaments, attracting leading golfers including Greg Norman, Wayne Grady and Ian Baker-Finch. An excellent function room offers meals on 'Bonanza Nights', last Friday of the month.

Traralgon Bowls Club Inc.

Cnr Liddiard Road and Gwalia Street, Traralgon. Ph: 5174 2156

Bowls greens, function room, TAB and counter meals available.

Outdoor Swimming Pool

Cnr Breed & Seymour Streets, Traralgon. Ph: 1300 367 700

Full kiosk and amenity facilities. Open December - March.

Morwell Golf Club

Fairway Drive, Morwell Ph: 5133 6343

One of the most varied in the region with spectacular views down the valley and nearby wetlands. One of country Victoria's well presented, yet demanding Par 72 (ACER 72) lay outs, numerous bunkers and water hazards. The club caters for all types of social occasions, open 7 days a wee. Everybody is welcome.

LATROBE CITY TOURISM

RECREATION, SPORTS & LEISURE CONTINUED

LV Golf Driving Range

Lot 2 Toners Lane, Morwell Ph: 5134 2745

39 Driving bays – 300 Yard driving range – Target green. A great activity for all ages, including an excellent tuition program from professional golfers to beginners. Open: Monday and Wednesday 9 am to 7pm, Tuesday and Thursday to Sunday 9am to 5pm. Longer hours may be available during daylight savings. Please call to confirm.

Village Cinemas (Mid Valley)

Princes Drive, Morwell

Open 7 days a week. For screening times phone 5134 3877. 8 Cinemas, snacks and games room. www.villagecinemas.com.au

Tenpin Bowling

Chickerell Street, Morwell Ph: 5134 6450.

Open 7 days except Christmas Day, 9.00 am - late. 26 Lanes, some with bumpers. Games room and function room available.

Stadium 34

34 Bell Street, Moe, Ph: 5127 8300 or 0408 991 604

Roller skating on Saturdays and Sundays from 1.30 pm - 4.30 pm. Indoor sports weekdays: soccer, mixed netball, hockey and rollerderby. Special occasions catered for such as birthday parties.

Latrobe Leisure – Moe/Newborough

Old Sale Road, Moe, Ph: 5135 8333

Bocce, 25m heated pool, spa, sauna, gym, table tennis, basketball, badminton, fitness classes, squash and volleyball, athletics and velodrome. Open Mon – Thurs 6.00 am -9.00 pm, Fri 6.00 am – 8.00 pm and Sat – Sun 9.00 am – 5.00 pm

Latrobe Indoor Tennis Centre

Haigh Street, Moe, Ph: 5127 8080.

Moe Olympic Pool – Outdoor

Vale Street, Moe, Ph: 5127 2931. Open December - March.

Motorcross Energy Park

Coach Road, Newborough The Blue Rock Motorcycle Club, based in Newborough. Caters for Motorcross racing. www.bluerockmotorcycleclub.com.au

Bryant Park

Bill Schultz Drive Newborough. The new 1400-metre hillclimb circuit and clubroom venue of the Gippsland Car Club www.gippslandcarclub.com.au

Moe Golf Club

Thompson's Road, Moe, Ph: 5127 2731

With towering native gums lining snaking fairways and measuring 6,025 metres, this is one of Latrobe Valley's finest golfing challenges. The course takes in views of Lake Narracan and the surrounding mountains. The clubhouse has the capacity to hold over 200 people and is fully licensed. Fridays evenings meals are served

Yallourn Golf Club

Golf Links Road, Yallourn Heights

Ph: 5127 6962 Email: ygc@bigpond.net.au Website: www.golf.gippsland.com.au

The course measures 6,002 metres and the clubhouse offers great value dining on Friday nights, full bar and catering service plus billiards, bingo on Wednesday evenings and other social activities are available.

LATROBE CITY TOURISM

LOOKOUTS

Lookout – Loy Yang Power Station

“Miners View” Traralgon Creek Road (C483) (also known as Hyland Highway)
Approximately 5km from Traralgon the Miners View Lookout provides a great view of the open cut and its huge coal dredges. Open 7am – 5pm.

Petersons Lookout

Petersons Lookout is located on road W2 (dirt road) off the Tyers-Walhalla Road. The lookout is open from December to June and offers stunning views overlooking Tyers Gorge and Tyers River.

Tyers Lookout

Tyers - Walhalla Road, TYERS (just north of the town). Extensive views across the Latrobe Valley towards the Strzelecki Ranges. A great view by day or night.

Lake Narracan Lookout

Coach Road, Newborough.
Beautiful views over Moe, Newborough, Lake Narracan and the distant Baw Baw Ranges.

Yallourn Open Cut Coal Mine

Morwell-Yallourn Road (C471)
Near the old township of Hernes Oak, view of coalmine and working dredges, source of Victoria's power.

ATTRACTIONS

Miniature Steam Train

Peterkin Street, Traralgon
Located in Victory Park the miniature steam train operates on the fourth Sunday of the month (weather permitting) which adults and children can ride on for a gold coin donation. A great family day out. Health Regulations state that NO bare feet, thongs or open toed footwear are permitted on the train.

Morwell National Park

Ph: Parks Victoria 13 19 63. Website: www.parkweb.vic.gov.au
A small unique area of remnant forest in the northern foothills of the Strzelecki Ranges with over 40 species of native orchid. Explore nature's wonderland with cool fern gullies and giant mountain ash forests. Wildlife abounds in the park with wallabies, wombats, possums, kangaroos and koalas frequently sighted. Walkers often disturb a skink or a goanna on their travel. Facilities include picnic areas, toilets, water, gas BBQ and tables.

Latrobe Regional Gallery

138 Commercial Road, Morwell Ph: 5128 5700 Website: www.latrobe.vic.gov.au/Arts/Gallery/
Eastern Victoria's premier gallery featuring eight exhibition spaces, the gallery houses an impressive permanent collection of works and regularly hosts a diverse range of traveling exhibitions. Purchase excellent quality art and craft from the gift shop and speak to the informed staff to find out what's happening locally in the arts. Free admission. Open 10am - 5pm Monday to Friday, 11am - 4pm Saturday and Sunday. Closed Public Holidays. While your at the galley you can also enjoy the ambience of So Swish Café where you will find fresh food, cakes, great coffee and selection of wines.

Morwell Centenary Rose Garden

Commercial Road, Morwell
Gravel paths lead through a picturesque arrangement of garden structures which is enhanced with 3,000 rose bushes flourishing in four acres of parkland. There are over 250 varieties of roses planted in 100 beds displaying individual colours. Experience the delicate aroma of these blooms and enjoy their massed display of colour. Open all year – best viewing November to April. Free entry The garden never closes!

LATROBE CITY TOURISM

ATTRACTIONS CONTINUED

Gippsland Immigration Wall of Recognition & Kernot Lake

Kernot Lake, Princes Drive, Morwell, Website: www.gippslandimmigrationpark.com.au

The Gippsland Immigration Wall of Recognition is a tribute to immigrants who have lived and worked in Gippsland and contributed to the development of this beautiful region. The monument is set in a parkland beside a lake at Kernot Hall in Morwell. There is a graphic display of the history of immigration into Gippsland using four themes - 'Departing / Arriving, Settling, Working, Achieving'. BBQ & shelters, playground.

Hazelwood Pondage

Yinnar Road, Via Churchill. Follow signposts (C456). Caravan Park Ph: 5163 1566

Enjoy a variety of water activities including sailing, powerboats, yachting and canoeing with warm water all year round. Hazelwood Pondage is host to the Open Water Championships. A feature activity is sailing for all abilities with access to sailing dinghies on specified days. Picnic area and caravan park.

Please ask staff for directions.

Old Gipps town – Gippsland's Heritage Park

Lloyd Street, Moe, Ph: 5127 3082, Website: www.gippslandheritagepark.com.au

Re-created pioneer village of more than 30 buildings from across Gippsland, including Bushy Park Homestead, home of explorer Angus McMillan. Host of special events throughout the year such as Fairies in the Park (February), Jazz Festival (March) Gems 'n' Gold & Collectables (March) Teddy Bears Picnic (September), Craft & Models Expo (August) as well as a craft market on the last Saturday of every month (Market does not operate in June, July and August).

Moe Racing Club & Turfside Tabaret

Waterloo Road, Moe, Ph: 5127 1380, Website: www.moeracingclub.com.au

Home to Gippsland's biggest race meeting; The Moe Cup (Oct) as well as many country racing days, including Boxing Day. Baw Baw Country Cup (Feb), ANZAC Day and Melbourne Cup Day (Nov), Tabaret, function centre and bistro open for lunch and dinner 7 days.

Old Brown Coal Mine Museum

Corner of Third Street & Latrobe River Road, Yallourn North

Ph: 5167 1046. Website: www.browncoalminemuseum.websyte.com.au

Open Weekends and public holidays (except Good Friday & Christmas Day) 10.00 am – 4.00 pm (11.00 am – 3.00 pm during June – August) Photographic and memorabilia displays, paintings and medals of the original township known as Brown Coal Mine. Learn about the early pioneers and how they dug the coal. The museum also features Yallourn, the town dug up for coal.

WINERIES

Narkoojee Winery (meaning 'place of flowers')

170 Francis Road, Glengarry, Ph: 5192 4257, Website: www.narkoojee.com

Cellar door open 7 days a week from 10.30 am to 4.30 pm, visitors are welcome to taste current release wines with tasting platters. Located at Narkoojee is the restaurant by Jorg. by Jorg provides premium food, award winning wines, and a stunning location will make this a rewarding day out.

Traralgon Vineyard

140 Burnets Road, TRARALGON, Ph: 5174 0557, Website: www.traralgonvineyard.com.au

Traralgon Vineyard hosts wedding receptions, conventions, private functions and wakes, as well as holding both funerals and weddings in an on site chapel. There is a courtesy bus that operates each Friday night, taking vineyard guests into the Traralgon CBD. Bookings are highly recommended for all occasions and private functions can be held on any day or night of the week.

LATROBE CITY TOURISM

SHOPPING

Traralgon Stockland Plaza

Corner Franklin Street and Post Office Place, Ph: 5174 9477

With over 40 speciality stores including K-Mart and Coles Stockland Plaza has a variety of specialty retailers incorporating food, fashion, giftware, entertainment and services. The centre is open 7 days and with undercover parking, bus stop and taxi rank out the front, shopping is easy and convenient.

Traralgon CBD

Traralgon CBD includes Hotham, Seymour, Franklin, Church Streets and Post Office Place where you can find deli's, bakeries, quality restaurants and cafes, alfresco dining, fashion and fine gifts.

Mid Valley Shopping Centre

Princes Drive, Morwell Ph: 5133 7022

Mid Valley is home to a variety of shopping, including a great range of fashion, homewares, health and beauty with over 60 specialty stores, Target, Big W, Safeway, Bi-Lo plus fresh food, entertainment, alfresco dining, Bunnings Warehouse and food hall.

Morwell CBD

Encompassing the streets of Commercial Road, George Street, Tarwin Street, Hazelwood Road, Princes Drive, Buckley Street and Church Street.

Newborough Village

Rutherglen Road, Newborough

Mini-mart, butcher, newsagency, Post Office, cafes and take away food. Doctor, Giftware.

Purvis Plaza

22-30 Moore Street, Moe

Deli, butcher, green grocer, clothing, café, hairdresser, Tattsлото and shoe stores.

ART, CRAFT, ANTIQUES & MARKETS

Traralgon & District Art Society – Art on Track Gallery

Located at the former Railway Station, Queens Parade, Traralgon, Ph: 5176 6000

Open for display on Mon, Tues, Thurs and Fri. Classes Mondays and Fridays, and nights on Tues, Wed and Thurs. (Closed between Christmas & New Year). A working studio and art gallery offering a visual experience through their art collection all available for purchase. The society features social activities and hold classes for artists in the making.

Faith & Fabric

Traralgon Uniting Church, Park Lane, Traralgon, Ph: 5176 1029

Monday to Friday 9.00 am to 12.00 pm

Large innovative fabric art pieces based on contemporary and spiritual themes. All pieces are thematically and structurally designed and created by four ladies together. Created over a period of 20 years. With more still to be produced, these works are becoming recognized as unique art pieces. Books and greeting cards for sale.

Miss Milly's Crafts and Collectables

74 Seymour Street, Traralgon, Ph: 5174 6316

Mon – Fri: 9.00 am – 5.30 pm and Sat: 9.30 am – 1.00 pm.

Patchwork, wool embroidery, needlework, tassels, beads, etc plus teddy bears, soaps and giftware

LATROBE CITY TOURISM

ART, CRAFT, ANTIQUES & MARKETS CONTINUED

Traralgon Farmers Market

Kay Street Gardens, Traralgon. Website: www.traralgonfarmersmarket.org.au

Held on the fourth Saturday of the month. Fresh vegetables, organics, meat, eggs, honey, olives, cakes and so much more. 8.00 am - 1.00 pm Contact 0409 232 715.

REH Cork Club Craft Market

Kay Street Gardens, Traralgon

Ph: 5174 3494

Held on the second Saturday of every month. (closed July, August September)

Craft and second hand goods. Make it! Bake it!

50 Mile Market

Tarwin Street, Morwell. Website: www.50milefarmersmarket.com

The 50 Mile Farmers Market is an event drawing local producers within a 50 mile radius, gathering and maintaining a local fresh food network. The Market is planned to occur every 2nd Saturday on Tarwin Street in Morwell. Hopefully we will expand this to more locations in the Valley in the near future!

Anna's Old Wares

6 Elizabeth Terrace, Morwell Ph: 0412 483 054

Open: every second weekend, phone to confirm.

Friday 1.00 pm to 4.00 pm, Saturday 10.00 am to 4.00 pm and Sunday 9.00 am to 4.00 pm - only open

Latrobe Country Market – Every Sunday

Latrobe Road, Morwell

Contact: Peter on 0417 057 784

Variety of new and secondhand goods. Family canteen with hot food plus great atmosphere.

Switchback Gallery

Gippsland Centre for Art and Design, Federation University, Northways Road, Churchill

Phone: 03 5122 6261

Open: Mon – Fri, 9.00 am – 5.00 pm, closed public holidays. Toilets, bus access, disabled facilities and group tours accommodated.

Bev's Wonder World of Dolls / Airlie Bank Gallery

31-32 The Boulevard, Morwell Ph: 5133 9066 Mob: 0433 901 593

Situated in historic Airlie Bank homestead, Bev's wonderful collection consists of dolls from all over the world. Wheelchair access. Light refreshments available for touring parties Open: 10.00 am to 3.00 pm. Wed, Thur & Fri or by Appoint.

Arc Yinnar

Main Street, Yinnar Ph: 5163 1310

Centre for creativity and contemporary arts that combines a superb gallery, vibrant music venue, studio spaces for artists and resource services. Open 12.00 pm – 4.00 pm weekdays, 11.00 am - 3.00 pm Saturday.

Newborough Village

Rutherglen Road, Newborough

Admire the wall murals & sculptures amongst a mix of businesses.

Art FX – Sharon Anderson

17 Rutherglen Road, Newborough, Ph: 0409 436 268 Opening hours Thursday and Friday 10.00 am - 4.00 pm, other times by appointment. Working studio specialising in original framed screen prints, drawings, mixed media and many other original gift items. Sharon also holds workshops in a variety of mediums from screen printing to creative bookbinding.

ACCOMMODATION IN LATROBE CITY

Accommodation in Latrobe City

There is a wide range of accommodation venues from B&B's, serviced apartments and Caravan parks through to luxury accommodation. With the capacity to sleep over 2,000 people within our city at the various accommodation houses, you will be sure to find one to suit your needs.

Top of the range:

- Century Inn \$165 - \$300/night
- Montfort Manor \$160 - \$350/night
- Traralgon Serviced Apartments \$165 - \$350/night
- Brigadoon Cottages \$170 - \$198/night
- Creek Cottage B & B \$165 - \$200/night
- Bridges on Argyle \$160 - \$330/night

Motels:

- Quality Inn Latrobe Convention Centre \$120 - \$200
- Connells Motel \$105 - \$340/night
- Morwell Motel \$135 - \$180/night

Budget:

- Strzelecki Motor Lodge \$120 - \$200/night
- City Gardens Motel \$115 - \$160/night
- Comfort Inn Traralgon \$120 - 180/night
- Motel Traralgon starting at \$100/night
- Tandara Caravan Park starting at \$75/night
- Village Caravan Park starting at \$35/night
- Park Lane Caravan Park starting at \$37/night

** Please note the prices indicated above are approximate only - current May 2015*

Visitor Information Centre

For more information on booking accommodation in Latrobe City, please contact the Visitor Information Centre. Open 7 days a week 9.00 am - 5.00 pm

Phone: 1800 621 409

Website: www.visitlatrobecity.com.au, www.facebook.com/LatrobeEventsTourism

ACCOMMODATION IN LATROBE CITY

Maximum Accommodation Capacity in Latrobe City

TOWN	NAME	TYPE	ROOMS	BEDS	CAPACITY	DETAILS	TOTAL TOWN ROOMS	TOTAL TOWN BEDS	TOTAL TOWN CAPACITY
Boolarra	Ponderosa (Ph) 5169 6592	BB	1	2	3	1 Bedroom cabin in secluded surrounds. Double bed with fold out couch (for one person) in lounge.	1	2	3
Budgereee	Wild Valley Gippsland Retro Caravans	CP	1	2	4	Vintage caravan accommodation on site with camping sites also available	1	2	4
Churchill	Churchill Hotel (Ph) 5122 1800	M	5	5	10	Budget rooms. Restaurant and conference facilities.	5	5	10
Glengarry	Glengarry Hotel (Ph) 5192 4222	H	2	2	4	2 rooms available. Hotel open for meals Tuesday to Saturday.	2	2	4
Moe	Moe Motor Inn (Ph) 5127 1166	M	30	51	91	Capacity includes 10 sofas to sleep one adult. Additional rollaway beds avail but not included.	71	125	222
Moe	Comfort Inn (Ph) 5127 3344	M	28	49	72	Max capacity includes 10 divans. All ground floor units.			
Moe	Coalville Holiday and Training Camp (Ph) 5168 1270	C	6		28	Bunk style camp accommodation, pool.			
Moe	Moe Gardens Caravan Park (Ph) 5127 3072	CP	7	25	31	Caravan park in located next to the Moe Racing Club. 2 x 2 berth cabins, 2 x 4 berth cabins, 2 x 6 berth cabins			
Morwell	Morwell Hotel/Motel (Ph) 5134 1355	M	17	33	47	Full TAB facilities, a public bar with bar meals, a drive thru bottleshop, two alfresco dining areas and a Beacons Cafe serving great quality value for money meals.	199	313	520
Morwell	Morwell Motel (Ph) 5135 6840	M	22	22	44	Modern rooms, Wi-Fi, gym, laundry, conference facilities. Located in the centre of town.			
Morwell	Always Welcome Motel (Ph) 5135 6840	M	14	21	35	Smaller motel located close to the Morwell Rose Garden and Latrobe Regional Gallery.			
Morwell	Parkside Motel (Ph) 5134 3366	M	18	35	53	18 rooms in total (12 ground floor / 6 upstairs). parking for trailers.			
Morwell	Farnham Court Motel (Ph) 5134 3544	M	33	57	95	Licensed restaurant and bar, conference facilities.			
Morwell	Mid Valley Motel (Ph) 5133 7155	M	10	20	36	12 Ground floor rooms, air con, 1 large self contained family unit.			
Morwell	503 Princes Drive Motel (Ph) 5133 6991	M	6	8	17	Next to Italian Australian Club, short walk to shopping centre, cinema and ten pin bowling.			
Morwell	Coal Valley Motor Inn (Ph) 5134 6211	M	40	69	105	2 self contained apartments, deluxe, standard and economy rooms available. Conference/functions room and catering available.			
Morwell	Latrobe Valley Hotel (Ph) 5134 2633	H	12	12	24	Budget room. Restaurant on site			
Morwell	Comfort Inn Cedar Lodge (Ph) 5134 5877	M	27	36	64	All motel rooms are on ground level. Located close to Morwell Rose Garden and Latrobe Regional Gallery.			
Newborough	Brigadoon Cottages (Ph) 5127 2656	BB	6	18	14	Self contained cottages set on idyllic 15 acre rural property	6	18	14

ACCOMMODATION IN LATROBE CITY

Maximum Accommodation Capacity in Latrobe City

TOWN	NAME	TYPE	ROOMS	BEDS	CAPACITY	DETAILS	TOTAL TOWN ROOMS	TOTAL TOWN BEDS	TOTAL TOWN CAPACITY
Traralgon	Quality Inn Latrobe Convention Centre (Ph) 5173 7500	M	61	120	160	Restaurant and café on site, heated outdoor pool, 4 conference rooms with facilities, tennis court and gym.	414	737	1,134
Traralgon	Strzelecki Motor Lodge (Ph) 5174 6322	M	23	37	64	A multi level motel with spacious rooms. Some rooms have spas. Swimming pool.			
Traralgon	Motel Traralgon (Ph) 5174 2241	M	22	40	62	Motel is located about 50 meters from the Princes Highway Traralgon. With spacious area for vehicle parking, and all motel rooms are on ground level.			
Traralgon	Connells Motel (Ph) 5174 5221	M	14	30	37	A smaller motel near the Traralgon town centre. With refurbished 3 bedroom house/apartment.			
Traralgon	Comfort Inn Traralgon (Ph) 5174 7277	M	32	51	78	Located right in the Traralgon town centre. 3 self contained rooms. Conference room is also available.			
Traralgon	Century Inn (Ph) 5173 9400	M	49	49	98	4 star motel which offers great conference facilities. All king sized beds can be made into 2 single beds.			
Traralgon	City Gardens Motel (Ph) 5174 6066	M	13	23	36	Smaller motel located close to Traralgon town centre.			
Traralgon	Best Western Governor Gipps Motel (Ph) 5174 5382	M	24	31	55	Located in Traralgon's town centre with self contained apartments.			
Traralgon	Bridges on Argyle (Ph) 5116 7800	M	50	62	124	Built near Traralgon town centre. Conference rooms are also available. Pool 4 Star.			
Traralgon	Tandara Caravan Park (Ph) 5133 6206	CP	19	47	67	Standard and deluxe cabins, BYO linen. Limited camp sites.			
Traralgon	Park Lane Tourist Park (Ph) 5174 6749	CP	47	127	171	Great facilities for the family including Parky's Fun Park, ropes course and swimming pool. Conference room available.			
Traralgon	The Village Lifestyle & Leisure Park (Ph) 5174 2384	CP	6	24	28	10 acre property located halfway between Morwell and Traralgon. Sites, a range of cabin styles or bunkhouse. Pet friendly			
Traralgon	Creek Cottage B&B (Ph) 5174 4367	BB	3	4	8	Bed & Breakfast located in the Traralgon town centre. 3 apartments.			
Traralgon	Monfort Manor (Ph) 5174 8211	BB	4	4	8	5 star luxury B&B located 5 minutes from Traralgon town centre. Features 2 swimming pools, lake and tennis court.			
Traralgon	Grand Junction Hotel (Ph) 5174 6111	H	8	8	16	Budget pub style accommodation in the Traralgon town centre.			
Traralgon	Traralgon Serviced Apartments (Ph) 5176 0377	A	24	56	84	Serviced apartments located in the centre of Traralgon. Very spacious and modern. This property features 1 - 3 bedroom apartments.			
Traralgon	Mayfair Serviced Apartments (Ph) 5176 0592	A	8	12	20	4 x 2 bedroom apartments, 1.5 km from Traralgon town centre.			
Traralgon	Caravalle House	A	4	4	6	4 Bedroom house			
Traralgon	Gippsland Country Accommodation (Ph) 5176 6402	A	3	8	12	3 x three bedroom units located 5 minutes from Traralgon town centre. Self contained and spacious. Plenty of parking available.			

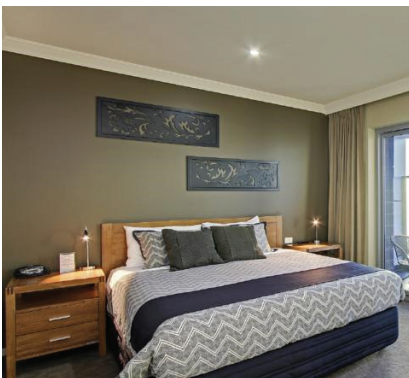
Accommodation Types : M - Motel H - Hotel BB - Bed & Breakfast, Cottages, Villas Ho - House A - Apartment C - Camps, Lodges CP - Caravan Park

ACCOMMODATION IN LATROBE CITY

Maximum Accommodation Capacity in Latrobe City

TOWN	NAME	TYPE	ROOMS	BEDS	CAPACITY	DETAILS	TOTAL TOWN ROOMS	TOTAL TOWN BEDS	TOTAL TOWN CAPACITY
Tyers	Alfay Cottage (Ph) 0418 918 309	BB	3	5	15	Self contained cottage	3	5	15
Yallourn North	Woorabinda School Camp	C			76	Bunk style camp accommodation, 100 Hectares of native bush land, open paddocks and wetlands			76
Yinnar	Jumbuk Park (Ph) 0427 691 568	C	12		60	Cabins and bunk style accommodation.	13	1	62
TOTAL ACCOMMODATION CAPACITY IN LATROBE CITY							715	1,210	2,064

Accommodation Types : M - Motel H - Hotel BB - Bed & Breakfast, Cottages, Villas Ho - House A - Apartment C - Camps, Lodges CP - Caravan Park
Please note:



DINING OUT

100 on Hotham

Open: Mon to Fri 7.30 am – 4.30 pm
Sat 8.00 am – 2.00 pm

Address: Crn Hotham and Church Street, Traralgon

Phone: 5176 0609

Open for breakfast and lunch or a quick bite. Classic cafe style with indoor and outdoor tables.

Amigo Mexican Restaurant

Open: Dinner 7 days from 5.00 pm

Address: Cnr Whittakers Rd & Princes Hwy, Traralgon

Phone: 5174 9521

Enjoy the authentic surrounds and extensive Mexican menu and refreshments. GF

Bow's Ice Creamery

Open: Mon to Thurs 8.30 am – 5.30 pm

Sat 8.30 am – 5.00 pm; Sun 9.30 am – 4.00 pm

Address: Stockland Plaza, Traralgon

Phone: 5176 4965

Award winning ice cream, baked potatoes, milkshakes.

Cafe Aura

Open: Mon 7.30 am – 5.00 pm; (open till late in Dec)

Tues to Fri 7.30 am – late; Sat 9.00 am – late;

Sun 9.00 am – 4.00 pm

Address: Shop 3, 19-23 Seymour Street, Traralgon

Phone: 5174 1517

Fully licensed cafe/restaurant with indoor or al fresco dining. Comprehensive menu. GF

Cafe Evviva

Open: Mon to Tues 8.00 am - 5.30 pm

Wed to Sat 8.00 am – Late

Sun 9.00 am – 4.00 pm

Address: Stockland Plaza, Traralgon

Phone: 5174 9455

Authentic Italian & International cuisine with a modern Australian influence. Relaxed modern cafe restaurant with indoor or al fresco dining. Fully licensed with a great wine selection. Quality coffee with an outstanding selection of cakes.

Cafe Stellina

Open: Fri 10.00 am - 3.00 pm

Sat & Sun 9.00 am - 4.00 pm

Address: 11 Peterkin Street, Traralgon

Phone: 5176 0005

Enjoy breakfast or lunch in this historic 1875 building or surround gardens along the Traralgon Creek. GF

Catinalla's Caffe & Winebar

Open: Mon to Wed 8.00 am - 6.00 pm

Thurs to Sun 8.00 am - midnight

Address: 11 Peterkin Street, Traralgon

Phone: 5176 0005

Lunch, dinner, coffee and drinks! All home made using local produce. PADRE Coffee (from Brunswick, Melbourne) Frittatas, savoury tarts, cakes, salads and pastas also available for takeaway.

Chen's Chinese Restaurant

Open: Lunch Mon to Fri 11.30 am – 2.00 pm

Dinner Tue to Sun 5.00 pm – Late

Address: 74 Hotham Street, Traralgon

Phone: 5174 4878

Smorgasbord lunch and dinner. All your favourite Asian dishes. Fully licensed.

Constancia

Open: Tue to Sat 10.00 am – 3.00 pm & 6.00 pm – Late

Address: 73 Seymour Street, Traralgon

Phone: 5175 0640

Modern contemporary Australian cuisine. Fully Licensed. Private dining room available.

DINING OUT

Dal Mondo Cafe/Restaurant/Function Centre

Open: Sun to Tues 7.00 am – 5.30 pm

Wed to Sat 7.00 am – Late

Address: 7 Post Office Place, Traralgon

Phone: 5176 6977

Delicious pizzas cooked to perfection in a wood fired oven. GF

Don Louie's Pizza

Open: Mon to Sat 5.00 pm – late

Address: Southside Plaza, Traralgon

Phone: 5174 8811

Takeaway, home delivery and dine in pizza and pasta restaurant. All you can eat menu available.

Essenz Café

Open: Mon to Wed & Sat 9.00 am – 5.00 pm

Thur 9.00 am – 6.00 pm, Sun 10.00 am to 4.00 pm

Address: Stockland Plaza, Traralgon

Phone: 0488 212 706

Cafe style foods. Includes wraps, foccacias, Italian style foods. Eat in or take away. Cakes made to order. GF

Gloria Jean's Coffee

Open: Mon to Fri 6.00 am – 7.00 pm

Sat 6.30 am – 6.00 pm; Sun 7.00 am – 6.00 pm

Address: Shop 2, Post Office Place, Traralgon

Phone: 5176 1449

Coffee and tea with cakes, pastries and lunch items available. GF

Glutopia Ice Creamery

Open: Mon to Fri 8.30 am – 5.00 pm

Sat to Sun 9.00 am – 5.00 pm

Address: Shop 4/27 Princes Highway, Traralgon

Phone: 5174 9733

Baked potatoes, pancakes, nachos, and gluten free foods available. In addition to wide range of ice cream flavours, birthday cakes and ice cream cakes are also available. GF

Grand Junction Hotel (The Hub Bistro)

Open: Open 7 days Lunch from 12 noon; Dinner 6.00 pm

Address: Cnr Franklin Street and Princes Hwy, Traralgon

Phone: 5174 6111

Bistro meals. Lunch specials available. Children's entertainment area. GF

HV Indian Restaurant

Open: Lunch Tue to Fri 11.30 am – 2.00 pm

Dinner Mon to Sat 5.00 pm – 9.00 pm

Address: 34 Church Street, Traralgon

Phone: 5174 4002

Authentic ethnic kitchen with all food prepared and cooked fresh on the day. Menu changing daily, offers a variety of tastes, flavours and hotness to suit your palate.

Iimis Cafe

Open: Mon to Fri 7.30 am – 9.00 pm

Sat 8.00 am – 10.00 pm, Sun 9.00 am – 4.00 pm

Address: 28A Seymour Street, Traralgon

Phone: 5174 4577

Cosmopolitan Mediterranean dining in a contemporary but relaxed atmosphere. Fine selection of home made cakes. Fully licensed. Bookings preferred. GF

Laneway Cafe

Open: Mon to Fri 6.00 am – 5.00 pm

Sat to Sun 7.00 am – 4.00 pm

Address: 108 - 116 Franklin Street, Traralgon

Phone: 5174 9688

Ideal for a quick bite - sandwiches, foccacias, cakes and a selection of hot foods available. Fresh juice bar. GF

DINING OUT

La Porchetta

Open: Open 7 days 11.30 am – Late
Address: 17 Seymour Street, Traralgon
Phone: 5174 5166

Italian cuisine specializing in pizza and pasta.
Eat in or take away, fully licensed. GF

Latrobe Quality Inn Restaurant

Open: Breakfast Mon to Fri 6.30 am – 9.30 am
Dinner Mon to Sat 6.00 pm – 9.00 pm
Café 5601 Open: Mon to Fri Breakfast, lunch and dinner
6.30 am – 8.30 pm; Sat 6.00 pm – 8.30 pm
Address: 5601 Princes Highway, Traralgon
Phone: 5173 7500

Restaurant quality breakfast, lunch and dinner.
Relaxed indoor atmosphere or outdoor garden
seating. House made cakes and Vittoria Coffee.
Take away also available. GF

Limnos Karvery Kafe

Open: Mon to Fri 6.00 am - 5.30 pm
Sat to Sun 8.00 am - 3.30 pm
Address: 35 Princes Highway, Traralgon
Phone: 5176 0200

Carvery is their speciality, but also have a
selection of pasta, salads, cakes and coffee. GF

Little Prince Eating House & Bar

Open: Tues to Sat 10.30 am – 2.30 pm; 5.00 pm – Late
Address: 58 Hotham Street, Traralgon
Phone: 5174 4866

Tapas and meals. Function room upstairs.

MOMO's

Open: Mon to Fri 7.30 am – 4.00 pm
Sat to Sun 9.00 am – 4.00 pm
Address: 103 Seymour Street, Traralgon
Phone: 5174 3281

Cafe style, gourmet breakfast, refined dinner.
GF

Nandos

Open: Sun to Thurs 11.00 am 9.00 pm
Fri 11.00 am – 10.00 pm
Address: 21 Post Office Place, Traralgon
Phone: 5175 0505

Portuguese style food. Burgers, chicken meals,
chips and vegetarian meals. Eat in or take away.
Indoor and al fresco dining. HL, GF

Neilsons

Open: Tues to Sat – Lunch 12.00 pm; Dinner 6.00 pm
Address: 13 Seymour Street, Traralgon
Phone: 5175 0100

Fine dining restaurant with warm atmosphere
and modern Australian cuisine. The only
restaurant in Traralgon awarded a Chef's hat.

O'Donnell's Café & Coffee Bar

Open: Mon to Fri 7.00 am – 5.00 pm
Sat 7.00 am – 3.00 pm
Address: 2/68 Hotham Street Arcade, Traralgon
Phone: 5176 4335

Serving Breakfast, lunch, morning and
afternoon tea.
Coffee, fresh juice bar, fruit smoothies and milk
shakes.

One Shot Double Shot

Open: Mon to Fri 7.00 am - 4.00 pm
Sat 8.00 am - 1.30 pm
Address: 55 Seymour Street, Traralgon
Phone: 5174 6852

Speciality roasted blends with light meals in a
trendy industrial rustic space.

DINING OUT

Poppyseed

Open: Mon to Fri 8.30 am – 4.30 pm
Sat 9.00 am – 1.00 pm

Address: Shop 8 /63 Seymour Street, Traralgon

Phone: 5175 0750

Delicious homemade food including baked potatoes, sandwiches, foccacias, soup, pies cakes and slices.

Red Annex & Miss Frou Frou

Open: Mon to Thurs 7.00 am – 5.30 pm
Fri 7.00 am – 6.00 pm
Sat 7.00 am – 3.00 pm

Address: Shop 4, 19-23 Seymour Street, Traralgon

Phone: 5176 4351

Cafe style breakfast and lunch menu available all day. Italian cakes and biscuits. Gravity coffee and T2 tea

Retro Café

Open: Mon to Fri 8.00 am – 5.00 pm
Sat 8.00 am – 1.00 pm

Address: 47 Franklin Street, Traralgon

Phone: 5176 6888

Home-style breakfasts and lunches. Dine in, take away and catering available. GF

Royal Exchange Hotel & Flanagan's Bar

Open: Lunch 7 days 12.00 pm – 2.00 pm
Dinner Sun to Thurs 6.00 pm – 8.00 pm
Fri to Sat 6.00 pm - 9.00 pm

Address: 64 Princess Highway, Traralgon

Phone: 5174 1281

Comprehensive menu including vegetarian dishes.
Seniors and children's specials. GF

Sabroso Tapas and Grill

Open: 7 days 11.00 am – Late

Address: Kay Street Entertainment Centre, Traralgon

Phone: 5176 1115

Flavours, aromas and exquisite tastes of authentic Mediterranean tapas accompanied by a fresh touch of modern cuisine. GF

Sari's Restaurant

Open: Lunch Tues to Sat 11.00 – 2.00 pm
Dinner 5.00 pm – 9.00 pm

Address: 4/29 Church Street, Traralgon

Phone: 5175 0005

A cultural experience of exotic flavours in fine Indian cuisine. Fully licensed. Dine in and take away. Bookings essential. HL, GF

Schnitz

Open: 7 days 10.00 am – 10.00 pm

Address: 81 Franklin Street, Traralgon

Phone: 5174 1055

Made to order, pan cooked schnitzels (chicken, beef, fish and vegetarian) served in rolls or wraps. GF

Terrace Café (Century Inn)

Open: Lunch Mon to Fri 12.00 pm – 2.00 pm
Dinner Mon to Sat 6.00 pm – 9.00 pm

Address: 5 Airfield Road, Traralgon

Phone: 5173 9400

A-la-carte dining in a stylish atmosphere. The Terrace Café takes pride in showcasing the best that Gippsland has to offer; the menu changes seasonally, and includes local specialities. GF

The Dark Horse

Open: Mon to Tues 7.00 am - 3.00 pm
Wed to Sun 7.00 am - 10.00 pm

Address: 22 Church Street, Traralgon

Phone: 5174 2471

Breakfast, lunch and dinner. GF

DINING OUT

The Juicy Rooster

Open: Mon to Sat 10.30 am - 8.00 pm
Address: 98 Hotham Street, Traralgon
Phone: 5175 0302

Roast chicken

The Green Olive

Open: 7 days 10.00 am – 2.30 pm
5.30 pm – 9.00 pm
Address: 146 Argyle Street, Traralgon
Phone: 5176 6652

Mediterranean food, wood fired pizza oven.
Huge playground and theatre room for kids. GF

The Ritz

Open: Daily 12.00 pm – 4.00 pm; 6.00 pm – Late
Address: 91-101 Hotham Street, Traralgon
Phone: 5174 0155

Offering a la carte menu with fresh seafood,
mouth watering steaks, delicious desserts made
daily. Local wines available. GF

The 3844 Cafe/Bar

Open: Café Mon to Fri 6.30 am – 5.00 pm
Sat 8.00 am – 5.00 pm
Bar Thurs to Sat 12.00 pm – 12.00 am
Address: 47-49 Princes Highway, Traralgon
Phone: 5176 4666

Café by Day, Bar by Night. Simple fresh
homemade food. Locally roasted coffee and
locally handcrafted tea.

Three Little Birds

Open: Daily 7.00 am – 5.00 pm
Address: 62 Hotham Street, Traralgon
Phone: 5176 4333

Café/restaurant with a wide range of gourmet
dishes.
Eat in or take away. GF

Tokyo House Teppanyaki

Open: 7 Days lunch and dinner
Address: Seymour Street, Traralgon
Phone: 5176 4567

Japanese Cuisine. Teppanyaki & Sushi Bar. Fully
Licensed.

Traralgon Bowls Club

Open: Lunch 12.00 pm – 2.00 pm
Dinner 6.00 pm – 8.00 pm
Address: Gwalia Street (Cnr Liddiard Road), Traralgon
Phone: 5174 2156

Bistro offers two and three course meal deals,
with other options available from the menu.
Cafe specials: Tuesday night – Parma night. GF

Traralgon Lion City

Open: Lunch Tues to Fri 12.00 pm – 2.00 pm
Dinner 7 days 5.00 pm – 9.30 pm
Address: 120 Franklin Street, Traralgon
Phone: 5176 0068

Chinese and Malaysian cuisine. Fully licensed
and BYO.

Traralgon Oriental Jade Asian Restaurant

Open: Lunch Mon to Fri 11.30 am – 2.00 pm
Dinner Mon to Sun 5.00 pm – Late
Address: 89 Hotham Street, Traralgon
Phone: 5174 1288 or 5174 9303

Specialty Malaysian and Chinese cuisine. Fully
licensed and BYO (wine only).

Traralgon Pizza Restaurant

Open: Tues to Sun 5.00 pm – Late
Address: 11 Franklin Street, Traralgon
Phone: 5174 3747

Pizza and pasta.

DINING OUT

Traralgon RSL

Open: Daily Lunch 12.00 pm – 2.00 pm
Dinner 6.00 pm – 8.00 pm
Address: 109 – 115 Grey Street
Phone: 5174 2035

Bistro style meals ranging from steaks to schnitzels. Daily specials. GF

Traralgon Thai

Open: Daily Dinner 5.00 pm – 11.00 pm
Address: 39 Hotham Street, Traralgon
Phone: 5176 4949

Authentic Thai cuisine in a warm atmosphere. Fully licensed and BYO. GF

Traralgon Vineyard – Zanella Estate

Open: Lunch Thurs to Sun 12.00 pm
Dinner Thurs to Sun 6.00 pm
Address: Burnets Road, Traralgon
Phone: 5174 0557

Gourmet food and a great selection of locally produced wines. Live music Saturday nights. Bookings essential as restaurant may be closed for functions. GF

Vietnamese Wok

Open: Dinner 7 days 5.00 pm – 10.00 pm
Address: 33A Church Street, Traralgon
Phone: 5174 4488

Vietnamese, Chinese, Malaysian and Singaporean meals.

Vishu's Jaika (Comfort Inn)

Open: Daily 5.30 pm - 10.00 pm
Address: 40 Princes Highway, Traralgon
Phone: 5174 7277

Indian Cuisine

Wan Loy

Open: Lunch Tues to Sat 12.00 pm – 2.30 pm
Dinner daily 5.30 pm – 10.00 pm
Address: 9B Church Street, Traralgon
Phone: 5174 3734

Chinese cuisine. Dine-in or fast take away.

Jorg at Narkoojee

Open: Fri to Sun 11.00 am – 9.00 pm
Address: 170 Francis Road, Glengarry
Phone: 5192 4550

Modern Mediterranean influenced dishes incorporating local produce. GF

Bushies Bakery

Open: Mon to Fri 7.00 am - 5.00 pm
Sat to Sun 9.00 am – 3.00 pm
Address: 13 Main Street, Glengarry
Phone: 5192 4999

Fresh bread, pies, pastries, cakes, coffee and more. Award winning pies.

Glengarry Pizza

Open: Wed to Sun 4.00 pm – 10.00 pm
Address: 11 Main Street, Glengarry
Phone: 5192 4748

Authentic style pizza's cooked with a traditional medium crust. All pasta's are made using fresh healthy ingredients. Our chickens are La Ionica, which are processed chemically free, and roasted homestyle with herbs and spices. GF

Glengarry Pub

Open: Dinner Tues to Sat 6.00 pm - 8.30 pm
Lunch Fri to Sat 12.00 pm - 2.00 pm
Address: 25 Main Street, Glengarry
Phone: 5192 4222

Bistro style meals ranging from steaks to schnitzels. Daily specials. GF

DINING OUT

AlFresh 2 Go

Open: Mon to Fri 8.30 am – 5.00 pm

Address: 8 Tarwin Street, Morwell

Phone: 5134 1633

Breakfast and home cooked healthy meals including smoothies and fresh juices. GF

Cafe Crema on Buckley

Open: Mon to Fri 8.00 am – 4.00 pm

Address: 98 Buckley Street, Morwell

Phone: 5133 3322

Breakfast and lunchtime menu with a good array of foccacias, open sandwiches, baguettes and salads. Handmade chocolate, cakes and connoisseur coffee. GF

Cafe Qu Bah

Open: 7 Days 8.00 am – Late

Address: MidValley Shopping Centre, Morwell

Phone: 5133 0777

Fully licensed restaurant/café/bar. Breakfast menu available 7 days till 11.30 am. Movie/meal deals available. GF

Claudia's Cafe

Open: Mon to Fri 8.00 am – 4.00 pm

Sat 8.30 am – 12.00 pm

Address: 37 George Street, Morwell

Phone: 5134 1600

Breakfast menu available until 10.30 pm weekdays and from 8.30 am – 12.00 pm on Saturdays. Home made food a speciality. Locally roasted Brazilian blend coffee and a full range of teas and chai lattes are available. GF

Don Louie's Pizza

Open: Tue to Sat 5.00 pm – 8.30 pm

Address: Commercial Road, Morwell

Phone: 5134 2327

Pizzas – take away and delivered.

Dragon Palace Chinese Restaurant

Open: Lunch Tues to Fri 11.30 am – 2.00 pm

Dinner 7 days 5.00 pm till Late

Address: 243 Princes Drive, Morwell

Phone: 5133 7488

Chinese dine-in and take away cuisine. Licensed and BYO.

Foon Lok Chinese Restaurant

Open: Lunch Tue to Fri 12.00 pm – 2.00 pm

Dinner 7 days 5.00 pm – 10.00 pm

Address: 8 George Street, Morwell

Phone: 5134 4259

Dine-in or take away. BYO.

Gaztronomy & Gaz Bah

Open: Lunch Tue to Fri 11.30 am – 2.00 pm

Dinner Tue to Sat 6.00 pm – late

Address: 15 Church Street, Morwell

Phone: 5134 2913

International cuisine, monthly theme nights. Fully Licensed. Gaz Bah Thu Fri 5.30 pm – 10.00 pm. Middle eastern and Mediterranean style mezze & tapas.

Gourmet Cafe

Open: Mon to Fri 6.00 am – 5.00 pm

Address: 152 Commercial Road, Morwell

Phone: 5134 8642 or 51348331

Roast meals, sandwiches, rolls, chicken schnitzel, baked potatoes, cakes.

DINING OUT

Italian Australian Club – Emilio's Bistro

Open: Lunch daily 12.00 pm – 2.00 pm
Dinner Sun to Wed 6.00 pm – 8.00 pm
Thurs to Sat 6.00 pm – 9.00 pm
Address: 499-501 Princes Hwy, Morwell
Phone: 5134 3541

Freshly made Italian specialities along with bistro favourites. GF

Latrobe Valley Hotel

Open: Lunch and dinner daily
Address: 179 Princes Drive, Morwell
Phone: 5134 2633

Bistro, bar and function room. Karaoke on Thursday nights with live music on Friday nights.

Little Malaysia

Open: Lunch Tues – Fri 11.30 am – 2.00 pm
Dinner Tues – Sun 5.00 pm – 9.30 pm
Address: 8 Church Street, Morwell
Phone: 5134 1405

Malaysian/Chinese/Thai cuisine. Dine in or takeaway. GF

Love Pizza & Pasta

Open: Daily 8.00 am – 10.00 pm
Address: 6 Hoyle Street, Morwell
Phone: 5133 3452

Pizza and pasta dishes. Coffee and cake. GF

Morwell Bowling Club

Open: Lunch Sun to Friday 12.00 pm – 2.00 pm
Dinner Mon to Sun 6.00 pm – 8.00 pm
Address: Hazelwood Road, Morwell
Phone: 51 34 3449

A variety of family meals including lunch specials and senior specials every Monday. Seniors Meal Deal Mon (must present senior's card) GF

Morwell Central

Open: Lunch Mon to Sat 11.30 am – 2.00 pm
Dinner Wed – Sat 5.30 pm
Address: 192 Commercial Road, Morwell
Phone: 5133 0429

Modern Australian tapas & dishes. Bar & TAB in separate section. GF

Morwell Club

Open: Daily Lunch 12.00 pm – 2.00 pm
Dinner 6.00 pm – 8.30 pm
Address: 136 Helen Street, Morwell
Phone: 5134 2671

Buffet Meals Saturday & Sunday nights. Large play area for the kids. Poker Wednesday & Saturday night. Bingo Thursday & Sunday nights. GF

Morwell Hotel (The Top Pub)

Open: Lunch Daily 12.00 pm – 2.00 pm
Dinner Sun to Thurs 6.00 pm – 8.30 pm
Fri to Sat 6.00 pm – 9.00 pm
Address: 311 Princes Drive, Morwell
Phone: 5134 1355

Bistro meals with a good variety of starters to full meals. Specials board. Al fresco dining available. Kids entertainment area with play stations. GF

Morwell RSL (Victoria Cross) Bistro

Open: Daily for lunch and dinner
12.00 pm – 2.30 pm and 6.00 pm – 8.30 pm
Address: Elgin Street, Morwell
Phone: 5134 2455

A wide variety of dishes to suit your tastes. "All you can eat" seafood – first Wednesday of month Smorgasbord - Friday & Saturday nights. GF

DINING OUT

Out of India

Open: Lunch Wed to Fri 12.00 pm – 2.00 pm
Dinner Tues to Sun 5.00 pm – 9.30 pm

Address: 109 Buckley Street, Morwell

Phone: 5133 6292

Dine in or take away. Fully licensed and BYO. Indian, Chinese, Malaysian, Indonesian and Thai meals. 10% discount on Tuesdays. HL, GF.

Peckish

Open: Mon to Fri 7.00 am – 5.00 pm

Address: 80 Buckley Street, Morwell

Phone: 5134 4701

Casual indoor/outdoor venue with home cooked food. Ideal for a quick bite.

Punjab Court House Indian Restaurant

Open: Mon to Fri 12.00 pm – 9.00 pm

Sat to Sun 4.00 pm – 9.00 pm

Address: 23 Tarwin Street, Morwell

Phone: 5133 9555

Indian cuisine. Dine In or Take Away. HL, GF.

Saltbush Restaurant & Café

Open: Mon to Tue 8.00 am – 5.20 pm

Wed to Sat 8.00 am – 11.00 pm

Address: 148 Commercial Road, Morwell

Phone: 5134 8550

Modern Australian. Eat-in & Take away. Breakfast, lunch & Dinner. Catering & functions. GF

Silvers Restaurant

Open: Lunch Mon to Fri 12.00 pm – 2.30 pm

Dinner Mon to Sat 6.00 pm – Late

Address: 5 Hazelwood Road, Morwell

Phone: 5134 8331

Menu to suit a variety of tastes including some food intolerances. Fully licensed. Group bookings Monday to Friday. GF

So Swish Cafe (Gallery)

Open: Mon to Fri 8.00 am – 4.00 pm

Sat to Sun 10.00 am – 3.00 pm

Address: 138 Commercial Road, Morwell

Phone: 5133 0379

Located at the Latrobe Regional Gallery. Indoor and outdoor dining. Great array of light main meals from dip and antipasto platters, home made soups, open sandwiches and salads. Licensed venue. GF

Tania's Deli (Café & Catering)

Open hours: 7.30 am – 4.00 pm

Address: 2 Tarwin Street, Morwell

Phone: 0412 736 811

Breakfast menu with Jasper coffee. Speciality cakes, muffins, biscuits & slices for morning & afternoon tea. Variety of options for lunch with inside and outside dining. GF

Waratah Restaurant (GippsTAFE)

Open: Lunch Thurs to Fri from 12.00 pm

Dinner Wed to Thurs from 7.00 pm

Address: Cnr Monash Way & Princes Drive, Morwell

Phone: 5120 4567

Help train a hospitality student. Menu: Table d'hote, great value, friendly service and delicious food.

Churchill Chinese Restaurant

Open: Lunch Tues to Fri 11.30 am - 2.00 pm

Dinner Fri to Sat 5.00 pm - 10.30 pm

Dinner Sun to Thurs 5.00 pm - 10.00 pm

Address: Hazelwood Village, Churchill

Phone: 5122 3294

Hong Kong chef specialising in Chinese cuisine. Licensed and BYO. Takeaway available. GF

DINING OUT

Churchill Motel

Open: Mon to Sat 4.00 pm – 10.00 pm

Address: 4/42 Moore Street, Moe

Phone: 5127 7497

Dining room has two children's play areas for different age groups. Booking for dinner is essential. GF

Amay Cafe & Restaurant

Open: Mon to Tues 8.00 am - 3.30 pm

Wed to Fri 8.00 am - 3.30 pm & 6.00 pm - 9.30 pm

Sat 8.00 am - 2.00 pm & 6.00 pm - 9.30 pm

Address: Shop 3/85 Albert Street, Moe

Phone: 5127 3280

All day breakfast, lunch and dinner. Coffee and cakes. Eat in or take away. BYO (Fully licensed). GF

Australasia Cafe de Restaurant

Open: Fri to Sun 12.00 pm - 9.00 pm

Lunch Mon to Thurs 12.00 pm - 3.00 pm

Dinner Mon to Thurs 6.00 pm - 9.00 pm

Address: 1 Balfour Place, Churchill

Phone: 5122 1800

Authentic Indian Cuisine. GF

Bryas Cafe

Open: Mon to Sun 8.00 am – 4.00 pm

Address: 91 Albert St, Moe

Phone: 5127 2260

Menu consists of a handful of main meals and light snacks, specialising in home-made pies and quiches. All day breakfast menu available. Phone orders. Catering Functions. Fully licensed. GF

Champagne Charlie's Cafe

Open: Mon to Fri 9.00 am – 3.30 pm

Address: Purvis Plaza, Moe

Phone: 5127 5506

Home made cakes/biscuits, light meals. Take away available

Chinese Dragon Cafe

Open: Daily (except Tuesday) Lunch 12.00 pm – 2.00 pm

Dinner 5.00 pm – 9.00 pm

Address: 2 Fowler Street, Moe

Phone: 5127 1310

Take away only. GF

Coffee Central

Open: Mon to Fri 6.45 am – 4.00 pm

Sat 8.00 am – 1.00 pm

Address: 10 Moore St, Moe

Phone: 5126 0362

Home style cooking specializing in Devonshire Teas. Unique coffee blend on offer.

Da Nunzio's Restaurant

Open: Lunch Tue to Fri 12.00 pm – 2.00 pm

Dinner Mon to Sun 6.00 pm – Late

Address: 25A Moore St, Moe

Phone: 5127 7598

A vast selection of quality dishes, in a relaxed environment, with professional service. Fully licensed. GF

Great China Inn

Open: Lunch Thurs to Fri 12.00 pm – 1.30 pm

Dinner Mon, Wed to Sun 5.00 pm – 9.30 pm

Address: 35 Lloyd Street, Moe

Phone: 5127 4720

Cantonese and Malaysian cuisine, some Thai dishes available. Home delivery nightly from 6.00 pm to 9.00 pm for Moe/Newborough area. GF

DINING OUT

Groovy Tuesdays

Open: Mon to Fri 7.30 am – 4.00 pm
Sat to Sun 8.30 am – 2.00 pm

Address: 13 Kirk Street, Moe

Phone: 5127 8755

A relaxing, modern environment with a popular selection of Di Bella coffees, teas, light meals and delightfully delicious cakes. Take away also available. GF

Gypsy's Pizza

Open: Mon to Sat 5.00 pm

Address: 84-86 Albert Street, Moe

Phone: 5126 1888

Pizza, pasta and ribs. Eat-in or take away. Home delivery available for Moe area. GF

Habib's Kebab House

Open: Tue to Sun 10.00 am – 9.00 pm

Address: 70A Albert Street, Moe

Phone: 5127 7551

Dine-in or take away. Specializing in kebabs. HL, GF

Lake & Cake Cafe

Open: Daily 9.00 am - 5.00 pm

Address: 53 South Shore Road, Moe

Phone: 5127 8724

Maddison's Restaurant/Café/ Bar

Open: 7 days Breakfast: 7.00 am

Lunch: 11.00 am – 3.00 pm

Dinner: 6.00 pm – Late

Address: Moore Street, Moe

Phone: 5127 6681

Fully Licensed, 100 seated inside, 30 seated outside. Take away coffee, scones, muffins and sandwiches. GF

Mia's Kitchen

Open: Mon to Thur 9.00 am – 6.30 pm

Fri 9.00 am – 9.00 pm

Address: 42 George Street, Moe

Phone: 5126 1823

Café Style dining with BYO. Home made pastas, cakes, sweets. Coffee and cake. Eat-in or take away. Gluten free pasta and cakes

Moe Corner Bakery

Open: Mon to Fri 9.00 am - 5.00 pm

Sat 9.00 am - 2.00 pm

Address: rear of Purvis Plaza, Market Street, Moe

Phone: 0430 619 855

Pies, pastries and coffee.

Moe Golf Club

Open: Fri 6.00 pm - 8.00 pm

Address: 26 Thompson's Road, Moe

Phone: 5127 2731

Counter meals. Smorgasbord last Friday of the month.

Moe Hotel

Open: Daily Lunch 12.00 pm – 2.00 pm

Daily Dinner 6.00 pm – 8.00 pm

Address: 45 Lloyd Street, Moe

Phone: 5127 1009

Featuring an extensive specials board, inclusive salad bar and wide variety of speciality dishes. Fixed price lunch specials. GF

DINING OUT

Moe RSL – Banjo’s on Albert

Open: Lunch 12.00 pm – 2.00 pm
Dinner 6.00 pm – 8.00 pm

Address: 63 - 65 Albert Street, Moe

Phone: 5127 1007

2 course Buffet lunch available Tuesday and Thursday. Lunch express menu available Monday to Saturday. Seniors menu available daily for lunch and dinner

Montree Cafe

Open: Mon to Fri 8.30 am - 5.00 pm
Sat 8.30 am - 1.30 pm

Address: 63 - 65 Albert Street, Moe

Phone: 5127 1007

Warm, welcoming and friendly cafe with access for all abilities and ample room to accommodate motorised scooters, wheelchairs and walking frames. Offering a great range of delicious food including an all day breakfast \$10 cooked lunch special and beautiful coffee and cake.

Noodle City & Sushi

Open: Tue to Sat 11.00 am – 9.00 pm
Sun to Mon 5.00 pm – 9.00 pm

Address: 2 Moore Street, Moe

Phone: 5127 3008

Specializing in Asian food. Mainly take away clientele with a few tables available for dining on the premises. GF

OG’S on Lloyd (Old Gippsdown)

Open: Mon to Fri 8.00 am – 4.00 pm
Sat to Sun 7.00 am – 4.00 pm

Address: 211 Lloyd Street, Moe

Phone: 5127 3082

Very nice heritage cafe, located in a beautiful spot. All day breakfast. Home style food.

Opal’s Pizza

Open: Tue to Fri 12.00 pm - 2.00 pm
Mon to Sun 6.00 pm - late

Address: 25B Moore Street, Moe

Phone: 5127 2915

Pizza and pasta dishes. Take away and home deliveries only. GF

Silks Restaurant on George

Open: Mon to Fri 12.00 pm – 2.00 pm
Dinner 6.00 pm – Late

Address: 50 George Street, Moe

Phone: 5127 7665

BYO restaurant with a la carte menu. Specials: Wednesday Schnitzel night. Friday Steak and Seafood night Sunday all you can eat smorgasbord lunch and dinner. GF

Spiders Cafe

Open: Mon to Fri 8.00 am – 4.30.00 pm
Sat 8.30 am – 2.00 pm

Address: 93 Albert Street, Moe

Phone: 5127 5755

Home style and affordable meals. Open for breakfast, lunch and snacks.

Turfside Tabaret & Function Centre (Moe Racing Club)

Open: Lunch 12.00 pm – 2.00 pm
Dinner 6.00 pm – 8.00 pm

Address: Waterloo Road, Moe

Phone: 5120 1333

The Bistro offers an extensive menu of quality cuisine at an affordable price. Enjoy either an indoor or outdoor dining experience. Dinner specials: Tuesday – pizza and pasta. Thursday – schnitzel, Sunday – lunch and dinner buffet. GF

DINING OUT

Turn Back Time Café

Open: Mon to Thurs 7.00 am – 4.00 pm
Fri 7.00 am – 8.00 pm
Sat to Sun 8.00 am – 1.00 pm
Address: Shop 9/36 George Street, Moe
Phone: 5127 8998

Bruno Rossi Coffee Home cooked meals.
Delicious cakes & slices. Thorpdale Pies. GF

Yong Choon Chinese Restaurant

Open: Tues to Sun from 5.00 pm
Address: Shop 1/57 Lloyd Street, Moe
Phone: 5127 7594

Variety of oriental cuisine, in particular Chinese.
In addition to a la carte, there are nightly buffets.
Takeaway service also available. GF

Zealley's Bakehouse Cafe

Open: Mon to Fri 7.30 am - 4.30 pm
Sat - Sun 8.00 am - 2.30 pm
Address: 38 Moore Street, Moe
Phone: 5127 3893

Bakery with in house cafe. Pies, sandwiches, and a variety of baked goods, tea, coffees and light lunches. Full breakfast daily until 10.30 am.

Zest Café

Open: Mon to Fri 10.00 am – 2.00 pm
Address: 26 George Street, Moe
Phone: 5127 3893

Student training café with sandwiches, cakes and coffee. Can cater your event.

Newborough Home Taste Chinese Restaurant

Open: Lunch Tue to Fri 12.00 pm - 2.00 pm
Dinner Tue to Thurs & Sun 5.00 pm - 9.30 pm
Fri to Sat 5.00 pm - 10.30 pm
Address: 4/43 Monash Road, Newborough
Phone: 5126 2120

Variety of Chinese meals. Takeaway also available.

Ricks on Rutherglen

Open: Mon to Fri 7.00 am - 3.00 pm
Sat 8.00 am - 12.30 pm
Address: 34 Rutherglen Road, Newborough
Phone: 5127 4126

Cafe service, dine in or takeaway - different meals daily. Home made pastries, cakes, slices, quiches and soups.

Rookies Pizzeria Bar & Grill

Open: Mon to Sat from 6.00 pm
Address: 2 – 4 Ollerton Avenue, Newborough
Phone: 5127 8900

As well as its famous wood-fired pizzas it also offers an extensive a la carte menu. Venue features a plasma TV, modern circular bar and warm atmosphere. GF

Yallourn Bowling Club

Open: Sat 6.00 pm - 7.30 pm
Address: Cnr Monash Road & Coach Road, Newborough
Phone: 5127 1913

Blackboard menu. Kids meals available. Licensed. Group bookings accepted.

Yallourn North Rossmore Hotel

Open: Thurs to Sat 6.00 pm - 8.00 pm
Address: 58 North Road, Yallourn North
Phone: 5167 1401

Entrees, mains and desserts. Dinner specials: Thursday is pot and parma night!

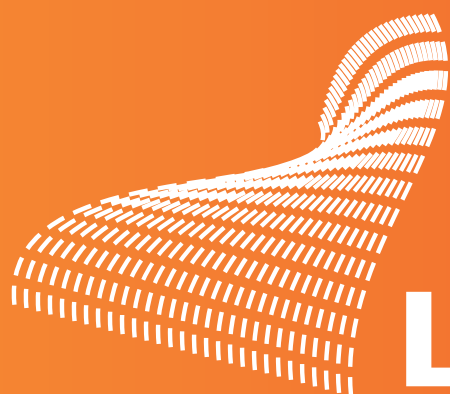
Please note: Information in this booklet was compiled by staff and volunteers at the Latrobe Visitor Information Centre. Whilst every effort has been made to ensure the details are correct, no responsibility will be accepted for errors, omissions and changes. For more information telephone 1800 621 409. Last updated May 2015.

FOR MORE INFORMATION

Visitor Information Centre

Phone 1800 621 409

Website www.visitlatrobecity.com.au
www.latrobe.vic.gov.au/events
www.facebook.com/LatrobeEventsTourism



LatrobeCity
a new energy